

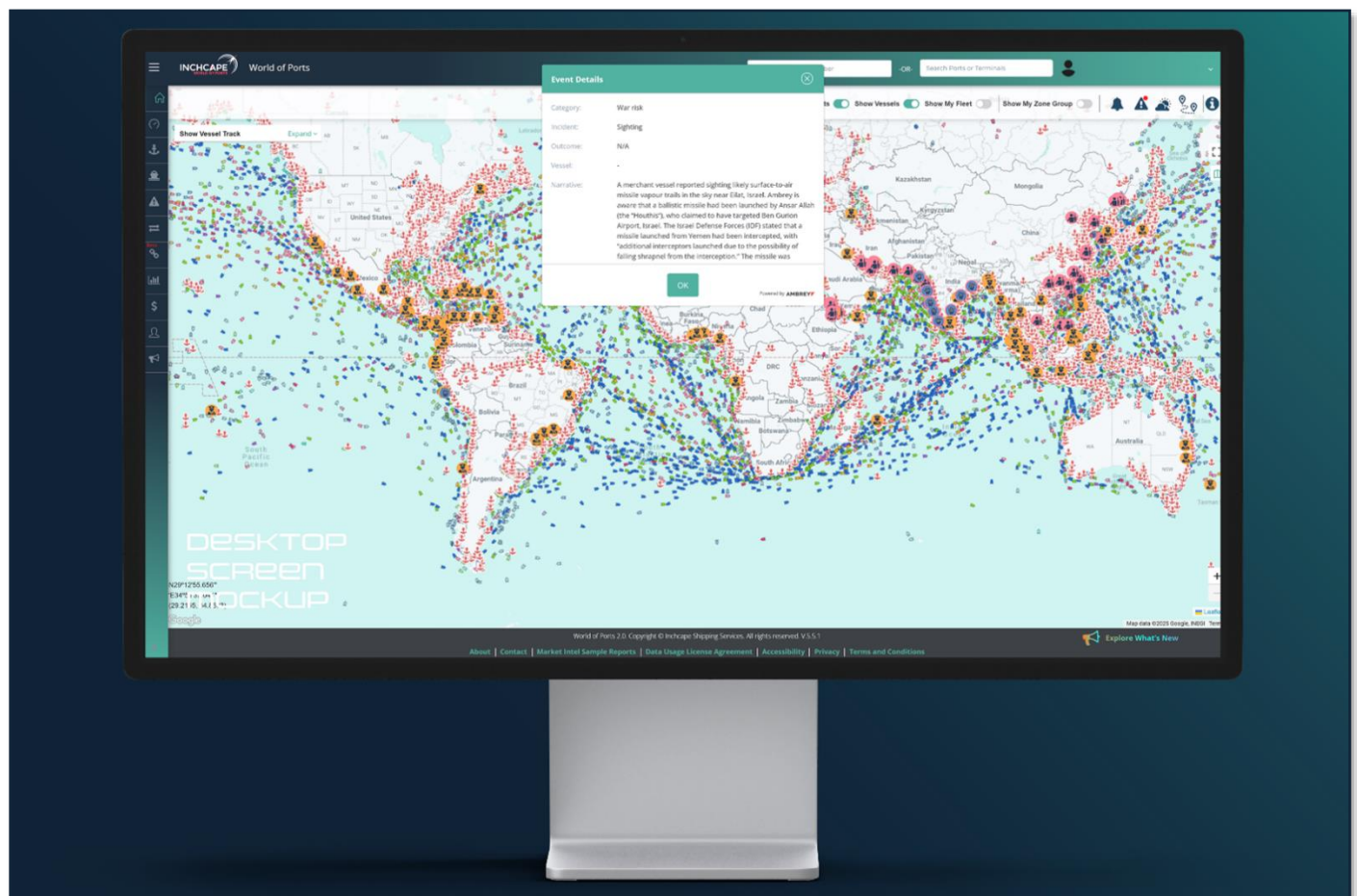
INCHCAPE SHIPPING SERVICES AND AMBREY TO ENHANCE WORLD OF PORTS WITH INTEGRATED MARITIME SECURITY INTELLIGENCE

London, 24 September 2025 — Inchcape Shipping Services is proud to further its strategic partnership with Ambrey, integrating Ambrey's advanced event risk management data into Inchcape's flagship digital platform, **World of Ports**.

This digital collaboration brings together cutting-edge technology, global reach, and deep industry expertise to deliver enhanced visibility and actionable intelligence for maritime stakeholders. The integration marks a significant step forward in empowering customers to make safer, smarter decisions in an increasingly complex operating environment.

About World of Ports

World of Ports simplifies port call management by providing up-to-date port information from Inchcape's global network of local expertise. Customers can access the platform via a portal or use API integration. Designed in collaboration with industry professionals, World of Ports supports port call planning, fleet tracking, port cost estimation, and access to market intelligence reports and verified vessel lineups. It enables users to streamline operations, minimise risks, ensure compliance, and drive business growth.



New Maritime Security (MARSEC) Feature Powered by Ambrey

The newly launched MARSEC feature, powered by Ambrey, allows users to view security-related events categorised into **activism**, **war**, and **crime**. This functionality helps users assess operational risks by staying informed about incidents in ports they operate in, enabling proactive security planning for port calls and voyages.

Ambrey's data enhances maritime security monitoring by combining automated alerts with expert analysis across various risk categories. These include war risk sightings (e.g., missile strikes, naval shelling), crime events (e.g., armed boarding), and activism-related threats (e.g., migration, terrorism). Within World of Ports, this data is presented in intuitive visual and tabular formats, allowing users to identify affected ports, categorise events, and access concise incident narratives.

Operational Impact

Customers using World of Ports can now explore the benefits of real-time visibility into emerging threats that may impact vessels, cargo, or personnel calling one of the +7000 ports we monitor. This includes potential disruptions such as port shutdowns, escorted operations, or enforced re-routing. The platform enables users to anticipate delays linked to instability or conflict-induced navigational hazards, and respond with agility—adjusting plans, reinforcing security protocols, or altering routes to safeguard assets.

Svend Stenberg, Chief Commercial Officer, commented, "World of Ports is where we provide agency for our customers' understanding of what is going on in ports around the world. With the current global geopolitical developments and multifaceted risks impacting our customers' supply chains, the partnership with Ambrey provides even better insights into the world of ports, helping our customers navigate these challenges and connect to actionable options. The combination of our people around the ports and advanced security monitoring by Ambrey gives our customers a view of ports that is unmatched in the market.

This is very exciting to offer our customers as it allows us to live our vision of creating a connected world where we enable our customers to make better decisions in every port".

Ben Westcott, Director Digital Services, Ambrey said *"Integrating our event risk intelligence into World of Ports marks a key milestone in delivering truly integrated maritime risk management. Users can now access not only operational and commercial data, but also real-time reporting of emerging risks—strengthening their resilience and decision-making in volatile environments."*

Availability & Demo

The enhanced World of Ports platform with Ambrey's integrated risk data is available now. Maritime operators, ship managers, charterers, and logistics teams are invited to sign up for a 7-day trial to explore the new capabilities.

World of Ports: Port Intelligence. Powered by People. Driven by Data.

[SIGN-UP TODAY>>>](#)

Notes to editors:**About Ambrey**

Ambrey is a global leader in maritime security and risk management, offering a comprehensive range of services to prepare, support and respond to crews, vessels and cargoes across the world. With a team of experienced professionals and a commitment to innovation, Ambrey delivers trusted solutions that enhance the safety and security of maritime operations.

AMBREY – For Every Seafarer, Every Vessel, Everywhere

www.ambrey.com

For further information please contact:

Ambrey – Timothy Mount

Marketing and Communications

T: +44 (0)20 3503 0330

E: tim.mount@ambrey.com

About Inchcape Shipping Services

Inchcape Shipping Services is the world's leading Port Agency and Marine Services provider. Since 1847, Inchcape Shipping Services has provided the local knowledge and means to deliver port calls that enable businesses to ship smoothly and trade successfully.

Inchcape combines its worldwide infrastructure with local expertise through its global network of over 260 proprietary offices across 60 countries and a team of over 3,200 committed professionals. Our unique geographical footprint means we can offer customers a full range of marine services, delivered safely, transparently and with exceptional service wherever they are in the world.

Our diverse global customer base includes owners, charterers, and ship managers in the oil and gas, cruise, container, and bulk commodity sectors, as well as naval, government, and intergovernmental organisations.

Through the real-time port data and information generated by our global network, coupled with investments in technology, we provide market and port intelligence that allows our customers to focus on their core business and make informed decisions.

Inchcape Shipping Services – Connect to a Smoother, Smarter Ocean

www.iss-shipping.com

For further information, please contact:

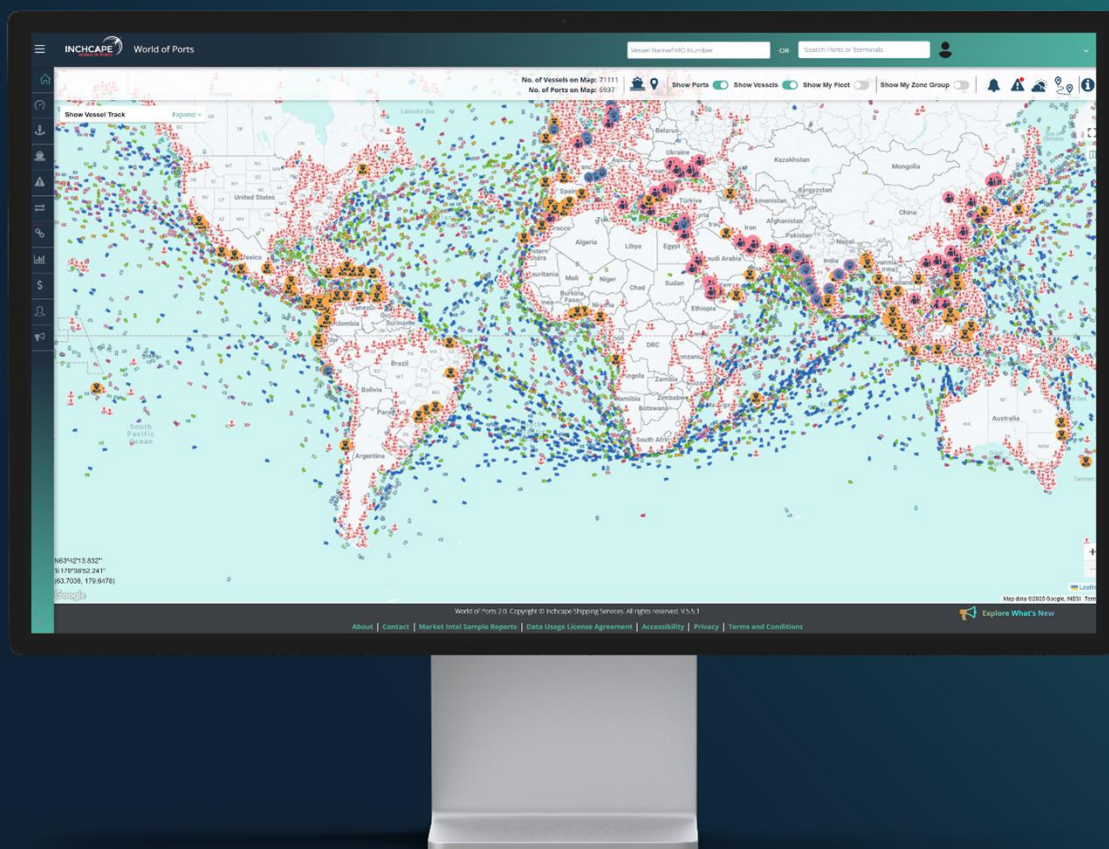
David Barker

Head of Global Marketing and Communications

Inchcape Shipping Services

T: +27 83 297 8774

E: david.barker@iss-shipping.com



INCHCAPE
WORLD OF PORTS

