

# AMBREY

PART OF  OCEAN INFINITY

## ADVISORY

---

[www.ambrey.com/advisory](http://www.ambrey.com/advisory)



## WELCOME TO AMBREY ADVISORY

**Ambrey provides a complete range of advisory services to support all your risk management needs whether at sea, in port or on land.**

This short brochure outlines the Ambrey Advisory offering:

- Review - Policy & Procedures
- Consultancy - Security
- Intelligence
- Crisis Response

Ambrey Advisory ensures that best practice, assurance and continuous improvement underpin your business risk requirements.

The Ambrey Advisory Team is made up of experienced maritime security consultants across a number of specialisms. Their work is focused solely on providing excellence set against clients' requirements.



## REVIEW - POLICY & PROCEDURES

### Ensuring Continuous Improvement and Transfer of Best Practice.

As maritime security risk experts Ambrey is the ideal partner to help ensure that your policies and procedures represent best practice. These reviews can be achieved through deskbound analysis or interactive workshops. They are scalable in scope and price set against your requirement and need. Reviews include:

**Shipping company security policy review** - desktop review of your current policy framework to ensure that it meets best practice.

**Security policy development workshop** - helping to develop a best practice policy framework for you and your needs.

**Policy briefings and workshops for your CSOs and SSOs or senior management/ executive board members** - regular updates on the threats and changes to the regulatory environment ensure your staff and crew stay up-to-date.

**Incident/crisis management protocols and procedures review and recommendations** - we all hope that the worst won't happen but those that prepare and think to the finish prevail. It pays to ensure that you have the right crisis protocols in place ahead of the worst occurring.

### Trend Analysis - Understanding Where, What And Why

The depth of our analytical expertise, size of our maritime dataset and innovative analytical software mean that we are able to Identify, Qualify and Forecast your risk through trend analysis resulting in bespoke thematic papers on areas that you wish to understand better. These products are bespoke to the client in line with your requirement. Areas of regular trend analysis include:

- Cargo sector, vessel and supply chain analytics and forecasting
- Maritime and marine crime
- Maritime counter-piracy
- Regional maritime geopolitical and security assessment including inter and intra-state security developments - human migration; Illegal, Unreported and Unregulated fishing; illicit trafficking; maritime security capacities...



## CONSULTANCY - SECURITY

**Ambrey has a team of experienced maritime security consultants able to deliver on all your ISPS security needs.**

Following the terrorist attacks on 9/11 in the US in 2001, the IMO introduced new security provisions for ships as part of the SOLAS Convention. A security code known as the International Ship and Port Facility Security (ISPS) Code was brought in. The ISPS Code works on the basis that security is proportionate to the threat with a three-tier level – low, medium and high risk. It applies to vessels and port facilities and contains mandatory requirements:

**Ship Security Assessment (SSA)** - this is the first element for any Company Security Officer (CSO) and includes assessing the ship's existing security measures, the key shipboard operations requiring protection, the threats to them and likelihood of them and identification of weaknesses in the ship's infrastructure and procedures.

**Ship Security Plan (SSP)** - the SSP follows the SSA and ensures that a specific vessel has the correct infrastructure and procedures to face threats across the 3-tier risk levels. It is a detailed plan that includes provisions to ensure that the crew are properly trained.

**Asset/Platform Survey** - this ensures that your complete range of maritime assets are secure against the threats they face. We are able to survey the following assets/platforms:

- Floating Production Storage and Offloading
- Floating Liquefied Natural Gas
- Floating Storage and Offloading
- Mobile Offshore Drilling Unit

**Offshore energy field security surveys and planning** - Ambrey Advisory has the experience and security specialisms to review and survey your offshore energy field to determine the threat profile and the security required to match it. We are then able to plan in detail to ensure that the field is properly secured whether through layered or matrix-based security models.

**Investigations** - security incidents and breaches will occur and Ambrey is here to support with our investigatory service which enables you to understand what has occurred, why and who has been involved. We will deploy experienced investigators to the incident to investigate and provide balanced and in-depth reporting. Our investigators have experience with corporate investigations, criminal investigations and assisting with breaches of Health and Safety and other internal disciplinary proceedings.



## INTELLIGENCE

### Helping You Understand The Operating Environment.

Ambrey Intelligence provides a range of services to complement its innovative Maritime Risk Intelligence (MRI) platform. The services are tailored to your needs and requirement. Their quality and effectiveness are a product of empirical risk analytics, critical thinking, scalable valuation and rigorous physical inspection. All our advisory services are designed and delivered by experienced maritime security intelligence analysts.

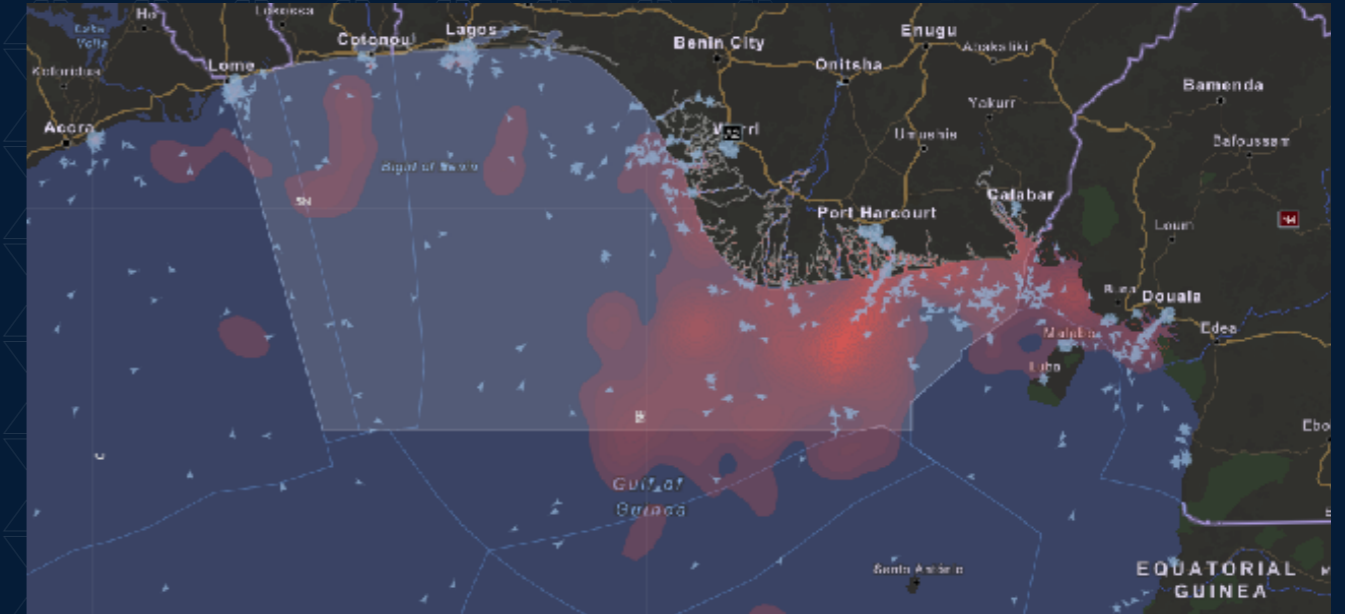
**Bespoke Route Risk Assessments** – driven by market-leading analytics software and proprietary data, this service will determine the vulnerability of an asset to specific threats and define the optimal solution.

**Anchorage, Port or Terminal Assessments** – underpinned by big-data and a globally-consistent quantitative risk methodology, known as RAPTOR, this service rates the likelihood of exposure to a host of perils, from war risk to maritime crime.

**Port City Risk Assessments** – delivered by in-country expertise and curated by our experienced analysts, this product ensures that owners, operators, and agents understand their exposure, enabling the safe transfer of crew and operations whilst alongside.

**Country Threat Assessments** – an in-depth review of a comprehensive range of perils that may impact a given operation or investment scenario, inclusive of decision-ready forecasts to ensure you don't have to compromise on your objectives, now or in the future.

## MRI PLATFORM



“WHERE POLICY MEETS PRACTICE”

## CRISIS RESPONSE

### **Training - Preparing you to face the unexpected.**

There is no substitute for training when it comes to preparing your people to face crisis. Ambrey Advisory understands that and has a developed set of training modules and packages to support you and your people.

**Counter-piracy workshop** - this is a one-day workshop that introduces your people to the threat of maritime piracy. We will bring it to you wherever you are. It covers briefing on what it is, where it occurs, how it manifests itself and how you can protect yourself from it.

**Incident management** - crisis strikes when least expected but you can prepare for it. Ambrey has extensive experience in maritime and wider crisis management, including piracy and kidnap for ransom. Your ability to react to crisis will be vital to securing your interests. We help by providing a series of training events to prepare you and your people, whether management or crew. Ambrey Advisory provides crisis briefing days through to fully immersive live scenario Crisis Management Team exercises.

**Crew behaviour/bridge procedures/comms protocols/risk mitigating protocols/emergency procedures/and actions - on in elevated/high threat sea areas briefing, training and exercising** - these briefing and training events are designed to be informative and practical to prepare your crews for the unexpected. Their focus is security, safety and responding to crisis.





PART OF  OCEAN INFINITY™

# ADVISORY

---

[www.ambrey.com/advisory](http://www.ambrey.com/advisory)